

# *A Coach Trip to Brunel's Royal Albert Bridge, Saltash And/or Plymouth City*

*For national aquarium, The Hoe and Barbican*

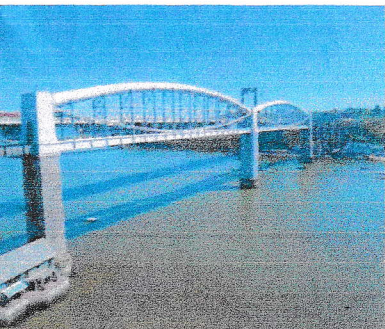
## *or Mount Edgecombe House Via Ferry*

Includes expert presentation by bridge officials of both bridges and rail trip over Brunel's bridge returning to Plymouth



**Leaving ss Great Britain 08.00**

**Wednesday 19 JUNE 2024**

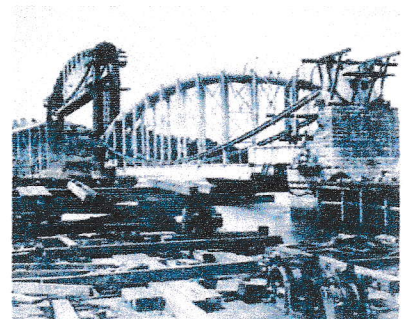


**Fare: Only £39pp**

**Minimum 30 passengers**

**Payable by MAY 1st**

**Entrance to Mount Edgecombe  
House £7.50, Gardens Free,**



**Ferry £5 return & return Bus Fare £2/free      Pay on the day**

**1HR HARBOUR BOAT TOUR AVAILABLE {not included in Tour price}**

**TOUR RETURNS FROM THE BARBICAN AT 18.00**

**Information**

**Warwick.hulme@btinternet.com**