

# ZOOM MEETING

There is no Zoom registration required, but you must purchase a £3 ticket in advance securely through the RCTS website via this link: <http://tinyurl.com/CHR24JAN24>

## Wednesday 24 January At 19:15 Steam in the British Isles



Image left courtesy  
of our guest  
speaker.

**Tony  
Bowles**

**The show starts with 10 b&w shots in 1962, and then continues all in colour starting in Northern Ireland. Moving to Scotland, we then continue down through northern England as far as the Peak district, then via Crewe into Wales, before moving on to South Western & the South of England. We end around the Midlands from Northants through to Gloucestershire with a fair amount of coverage around Stratford upon Avon where I lived half my life finishing at Toddington, where I have spent the other half.**

**The Monthly Newsletter of RCTS Chichester Branch.**
**Editor: Ian McKey**
**Distributor: Roger Sandford**
**Additional Proof Readers: Geoff Adams, Geoff May  
& John Barrowdale**
**Front Cover Poster by  
Roger Sandford ©**
**Contributors: Geoff May,  
Ian McKey, Roger Sandford.**
**What's on for the Railway Enthusiast in January**

Railway Name	Website	Contact Email	Contact Phone
Bluebell Railway	<a href="http://TheBluebellRailwayinSussex-Aheritagesteamrailway(bluebell-railway.com)">The Bluebell Railway in Sussex - A heritage steam railway (bluebell-railway.com)</a>	<a href="mailto:enquiries@bluebell-railway.com">enquiries@bluebell-railway.com</a>	01825 720800
Isle of Wight Railway	<a href="http://IsleofWightSteamRailway-The10MileMuseum">Isle of Wight Steam Railway – The 10 Mile Museum</a>	<a href="mailto:info@iwsteamrailway.co.uk">info@iwsteamrailway.co.uk</a> <a href="mailto:info@iwsteamrailway.co.uk">info@iwsteamrailway.co.uk</a>	01983 882204
Kent & East Sussex Railway	<a href="http://Kent&amp;EastSussexRailway-Tenterden-Northiam-Bodiam(kesr.org.uk)">Kent &amp; East Sussex Railway – Tenterden – Northiam – Bodiam (kesr.org.uk)</a>	<a href="mailto:enquiries@kesr.org.uk">enquiries@kesr.org.uk</a>	01580 765155
Watercress Railway	<a href="http://WatercressLine-HeritageSteamRailway">Watercress Line - Heritage Steam Railway</a>	<a href="mailto:info@watercressline.co.uk">info@watercressline.co.uk</a>	01962 733810
Amberley Museum	<a href="http://AmberleyMuseum">Amberley Museum</a>	<a href="mailto:office@amberleymuseum.co.uk">office@amberleymuseum.co.uk</a>	01798 831370
Hayling Light Railway Trust	<a href="http://TheHaylingLightRailwayTrust">The Hayling Light Railway Trust</a>	<a href="mailto:haylinglightrailway@yahoo.com">haylinglightrailway@yahoo.com</a>	07902 446340
Littlehampton Miniature Railway	<a href="http://Home(littlehamptonminiaturerailw">Home (littlehamptonminiaturerailw</a>		01903 719876
South Downs Light Railway	<a href="http://SouthDownsLightRailway">South Downs Light Railway</a>	<a href="mailto:info@south-downs-railway.com">info@south-downs-railway.com</a>	07518 753784
Stansted Park Light Railway	<a href="http://StanstedParkLightRailway">Stansted Park Light Railway</a>	<a href="mailto:help@sp-lr.co.uk">help@sp-lr.co.uk</a>	02392 413 324

Railway	Date(s)	Event
Bluebell Railway	01/01/2024	All Day Rover (Running Day)
Isle of Wight Railway	01/01/2024	New Years Day Special
Kent & East Sussex Railway	29/12/2023 - 01/01/2024	Steam into the New Year with us!
Watercress Railway	01/01/2024	New Year's Day Special (Running Day)
Amberley Museum	24/01/2024 - 09/02/2024	Open on Wednesdays, Saturdays and Sundays
Littlehampton Miniature Railway	01/01/2024	Running Day (Weather Permitting!)

## **Zoom - The new method of joining Zoom Meetings**

Since our last Zoom meeting in February 2023 some changes have been made to Chichester Branch ZOOM hosted meetings. The principle changes are :-

- The need to purchase a “ticket” to gain access to the meeting
- Payment of £3 to purchase the ticket.
- A new web based procurement process has been developed by the RCTS to facilitate purchase of the ZOOM ticket.


### **How to purchase your ZOOM ticket.**

The monthly Newsletter will contain a hyperlink which will take you to the purchasing webpage. The hyperlink will be found on Page 1 of the Newsletter (The Poster for the meeting).

After opening the hyperlink, start the purchase of your ticket by clicking the [Add to basket] button.

The system will then guide you through the rest of the process. On completion of the purchase you will be sent an e-mail to confirm your purchase and will contain a hyperlink that will enable you to join the ZOOM meeting on the night!

### **Sample Confirmation E-Mail**



**Thank you for your order**

Hi Ian,

Just to let you know — we've received your order #19470, and it is now being processed:

**[Order #19470] (2023-12-13)**

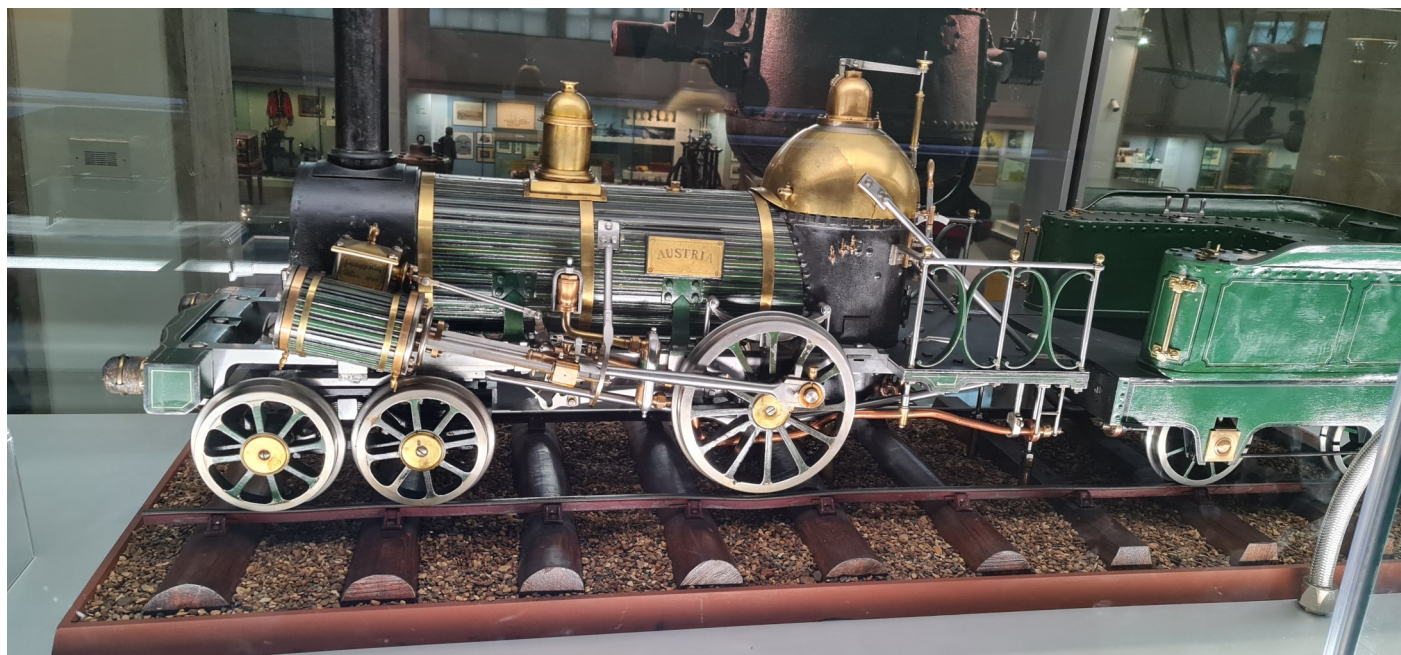
Product	Quantity	Price
Zoom ticket CHR Steam in the British Isles 24-01-24	1	£3.00

Chichester Meeting date 24th January 2024 @ 1915  
 Your Zoom link is: <https://us06web.zoom.us/j/88227206136?pwd=MnJlQWw5MzZPd0RnbExTNTlGRytUUT09>

<b>Subtotal:</b>	£3.00
<b>Payment method:</b>	Credit/Debit Cards
<b>Total:</b>	£3.00



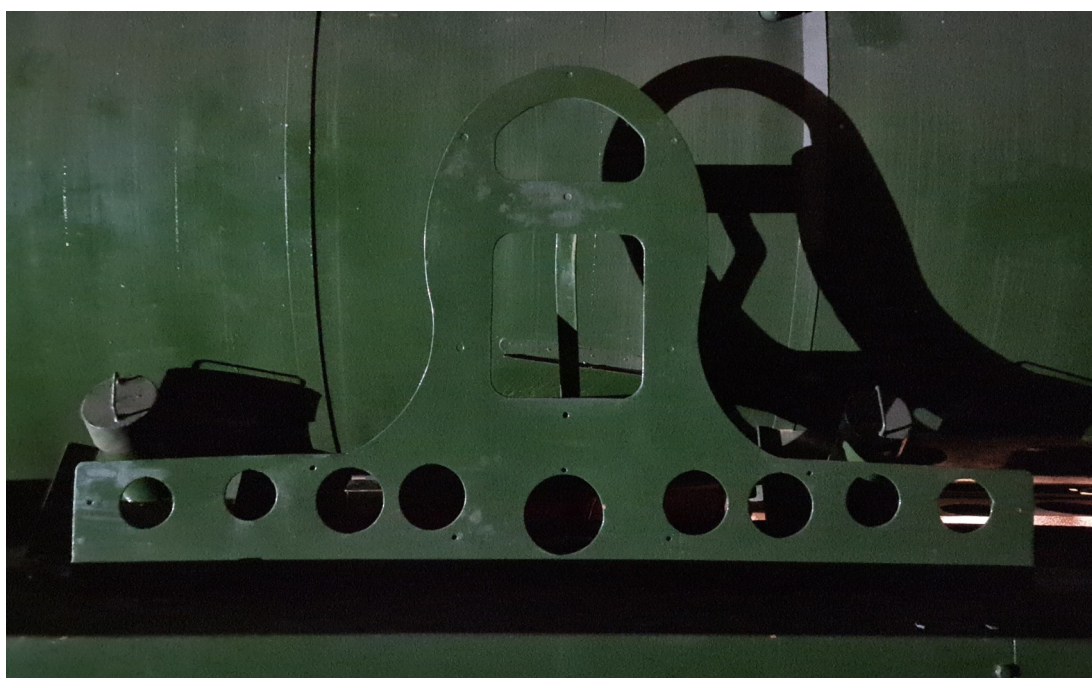
## **Railway Oddities by Ian McKey**



**Norris Locomotive, 1843**

William Norris of Philadelphia, USA produced this design of locomotive in 1837 for working railway lines with steep inclines and sharp curves. They were subsequently used by the Austrian Railways. Britain imported 17 engines from the USA between 1839 and 1842 for working the Lickey Incline. A further 9 were built by British Companies.

The above model is one of several fascinating models under the care of the Science Museum in London - Photographed in December 2022



Have you ever wondered how the Nameplates and Coats of Arms are fastened to the boiler of a Battle of Britain Class? This is what will hold them for 34059 "Sir Archibald Sinclair"



## Weald & Downland Museum - Steam Day August 2023

In August the Weald and Downland Museum held their “Story of Steam” day. Most of the exhibits were linked to agriculture so several Traction Engines were present on the day, together with saw benches stone crushers chaff cutters etc. The Railway models were in the Downland Gridshell building. For me it was a very pleasant surprise!



**Above:** Gauge 1 live steam model of GWR 4-4-0 “City of Birmingham” No. 3434 running with a rake of “Chocolate & Cream” coaches.

**Below:** Gauge 1 live steam model of Southern Railway Battle of Britain class “Spitfire” This model may have been produced by the Japanese company Aster.





## **Theme Park Railways.** By Ian McKey ©

During the past year my wife and I have enjoyed the company of our Grandchildren visiting both Legoland at Windsor and also Disneyland Paris. On each occasion Granfer (me) has managed to persuade them that a ride on the theme park railway was an essential part of the visit!

Both systems use a 3ft track gauge but are fundamentally in different in two aspects :-

1. The Legoland Express is fundamentally a ride which starts and finishes at the same place. The Disneyland Paris system is a true passenger transport system which stops at various places within the park allowing passengers to board or alight at the station of their choice.
2. The Legoland Express motive power is a steam outline locomotive powered by a diesel engine. The Disneyland engines are steam powered, burning LPG as a fuel source.



### **Legoland Express**

Steam outline 4-4-0 Built by Severn Lamb circa 1996 at Alcester Warwickshire.



### **Disneyland Paris**

There are 4 trainsets for the Railroad. All are steam powered. Three of the locomotives were built in 1991 by H.P. Phillips Engineering at Tredegar Wales. The fourth was built by Severn Lamb as HP Phillips had folded.

#### **Left.**

4-4-0 steam locomotive "George Washington" seen at Main Street Station, Disneyland Paris.



## The Bluebell in December! By Ian McKey



**Above:** Southern Railway Battle of Britain Class 34059 “Sir Archibald Sinclair” at Sheffield Park on 1st December 2023. The train is the Golden Arrow Pullman Dining train to East Grinstead. The engine has been prepared for repainting in the New Year so no nameplates are fitted.

**Below:** Standard Class 4MT 2-6-4T No. 80151 has been adorned with lights and decorated panels proclaiming “Secret Santa”. Not really my ideal livery but if it helps to increase the sales then it helps to keep the Bluebell going! The array of signals at Horsted Keynes is worth seeing.





## **May's Miscellany: by Geoff May ©**

Geoff writes :-

I am pleased to respond to the Editor's invitation to submit one or two images for inclusion in this and future newsletters. As the title suggests they will be chosen by me on a random basis and the only unifying theme will be that they will be railway related. Each image will be accompanied by a brief text.



Signal gantry at  
Newton Abbott  
station.

The Exeter area re-signalling project of the mid 1980's resulted in the closure of many mechanical signal boxes and their associated semaphores. They were replaced by a new Exeter Signalling Centre.

The Exeter panel eventually controlled the GW mainline from Totnes to near Bridgewater in Somerset; during 1987 the wonderful array of signals at Newton Abbott including the roof mounted gantry shown here were replaced as part of the project.